

# Protecting the Pinelands Against Deforestation and Other Threats

Christina Blauvelt

Department of Sociology and Anthropology,

The College of New Jersey



THE COLLEGE OF NEW JERSEY  
DEPARTMENT OF SOCIOLOGY  
AND ANTHROPOLOGY



## Introduction

As part of a case study for SOC345- Inequality, Pollution, and Environment, hoping to study the relationship between humans and the environment around them. More specifically, how humans react to or cause environmental issues we are facing. I chose to study deforestation in New Jersey’s national reserve in Burlington County, the Pinelands. I sought to understand what the threats are to the protected area, and how the Pinelands Commission is dealing with those threats. The Pinelands preserve is home to many animals, plants, and ecosystems that keep the integrity of Southern NJ.

## Methods

- Researched policies and regulations about the Pinelands national reserve
- Analyzed and compared concepts from case studies in *Twenty Lessons of Environmental Sociology* (2021)
- Researched issues that are among the biggest threats to the Pinelands

## References

Myers, J. (2021). *Twenty lessons in environmental sociology*. In 1213645336 904047263 K.A. Gould & 1213645337 904047263 T. L. Lewis (Authors), *Twenty lessons in environmental sociology*. New York: Oxford University Press.  
Pinelands commission PLAN REVIEW. (2019, April 22). Retrieved March 15, 2021, from <https://pinelandsalliance.org/pinelands-commission-plan-review/>  
O'Neill, J. (2017, July 09). N.J. pinelands, a protected jewel, still faces threats. Retrieved March 11, 2021, from <https://www.northjersey.com/story/news/environment/2017/07/03/nj-pinelands-protected-jewel-still-faces-threats/374474001/>  
South Jersey gas pipeline. (2019, February 12). Retrieved March 11, 2021, from <https://www.cleanwateraction.org/features/south-jersey-gas-pipeline>

## Discussion

- Ecological Modernization theory suggests that government can impose regulations to keep the relationship between economy and environment upheld.
- Environmental justice and groups are very engaged with the Commission as well as with the permits they allow for building and the amendments they pass each year.
- This relatively “untouched” area between two major metropolis of New York and Philadelphia needs to continue to be protected under rigid regulation in order to keep the land preserved.

## Conclusion

- Many issues pose threats to the Pinelands, among the highest is development pressure from business and economic players
- Keeping the Kirkwood-Cohansey Aquifer uncontaminated and clean from storm runoff or gas pipeline building.
- There are many endangered plants and other species that need to be protected
- The National Parks had been established to keep lands like the Pinelands protected from human intervention

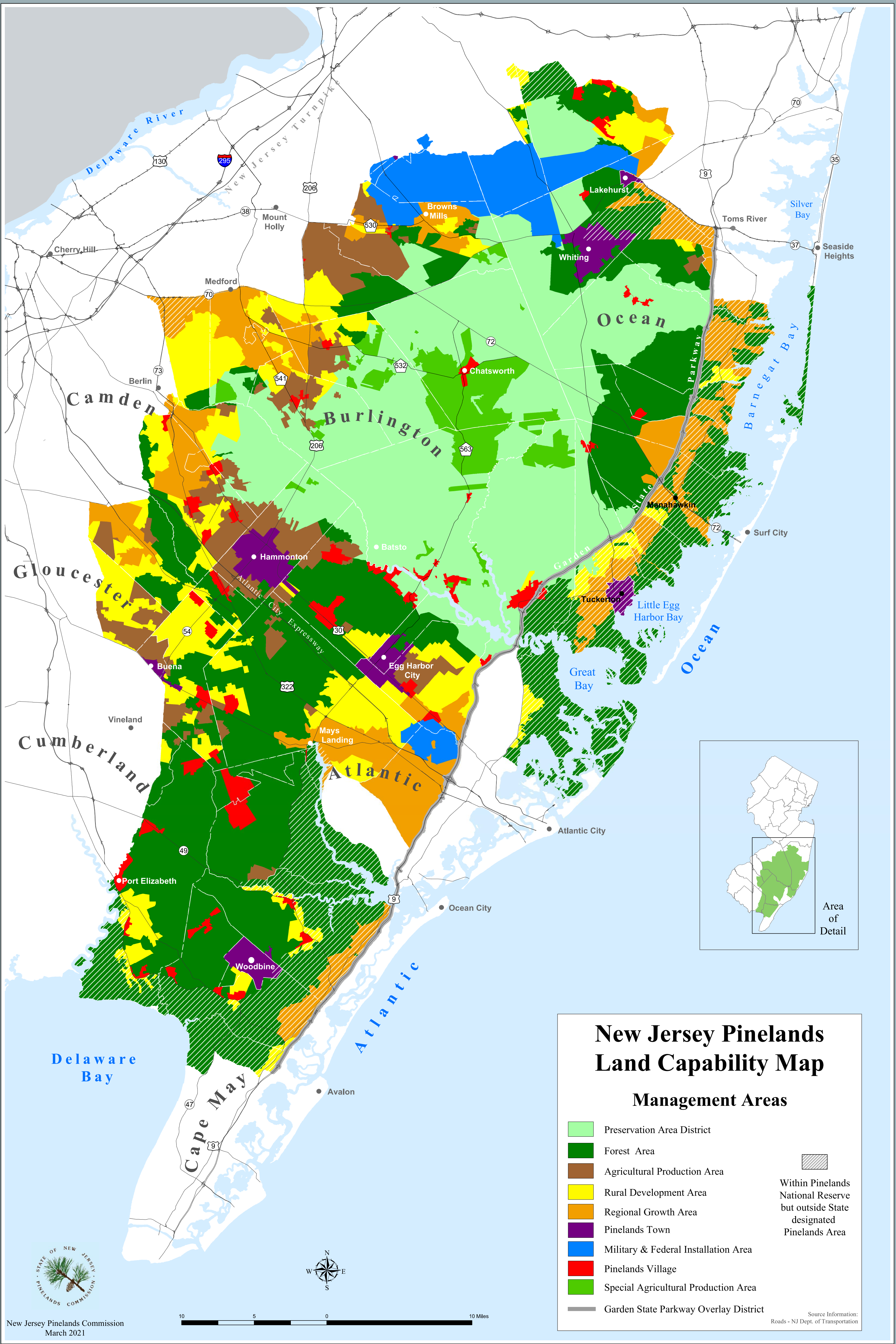


Figure 1. NJ Pinelands <https://www.nj.gov/pinelands/home/maps/>

